

## Let the State Employees Charitable Campaign be your **Community Connection!**

Participating in the annual tradition of the State Employees Charitable Campaign means donor CHOICE in giving, TRUST in charitable partners and ASSURANCE that you are using the most secure and efficient pathway available to State Employees and State of Michigan Retirees.

Your choice to give through the annual SECC means that you will bring hope to friends, neighbors and families all across Michigan.

### Giving is Easy!

- Select one or more participating charitable organizations from this brochure or for a complete list of participating organizations log on to:  
[http://www.misecc.org/charity\\_listings.html](http://www.misecc.org/charity_listings.html)
- Complete all of the sections on the pledge form, cut and return form along with your contribution.
- If paying by check, please remember to make checks payable to organization(s) of your choice (NOT SECC) and to write the code in the memo section of the check.

Pantone 307 U  
Pantone Hexachrome Green U



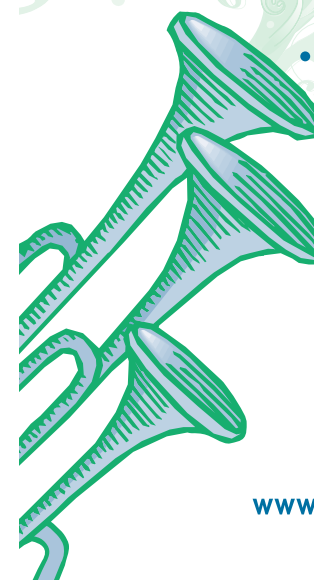
STATE EMPLOYEES CHARITABLE CAMPAIGN  
330 Marshall Street, Suite 211  
Lansing, MI 48912

[www.misecc.org](http://www.misecc.org)  
to give online



Visit us on  
Facebook  
and Twitter.

## 2012 Retirees Campaign



[www.misecc.org](http://www.misecc.org)



## SECC Retirees Code List

UA22 ALLEGAN COUNTY UNITED WAY  
 TV22 AMERICA'S CHARITIES  
 T422 BARRY COUNTY UNITED WAY  
 TN22 BATTLE CREEK UNITED WAY, GREATER  
 UZ22 BAY COUNTY UNITED WAY  
 TA22 BLACK UNITED FUND OF MICHIGAN  
 TE22 BRANCH COUNTY UNITED WAY  
 UC22 CAPITAL AREA UNITED WAY  
 TI22 CHAR EM UNITED WAY  
 T322 CLARE COUNTY UNITED WAY  
 TB22 COMM HEALTH CHARITIES OF MICHIGAN  
 UO22 COMMUNITY SHARES OF MICHIGAN  
 UF22 COPPER COUNTRY UNITED WAY  
 T522 CRAWFORD COUNTY UNITED WAY  
 TH22 DELTA COUNTY UNITED WAY  
 TJ22 DICKINSON COUNTY UNITED WAY  
 TT22 EARTH SHARE OF MICHIGAN  
 TG22 EASTERN UPPER PENINSULA, UNITED WAY OF  
 T722 EATON COUNTY UNITED WAY  
 TL22 GENESEE COUNTY UNITED WAY  
 TD22 GLOBAL IMPACT  
 TM22 GRATIOT COUNTY UNITED WAY  
 TS22 HEART OF WEST MICHIGAN UNITED WAY  
 UD22 INDEPENDENT CHARITIES OF AMERICA  
 TQ22 ISABELLA COUNTY, UNITED WAY OF  
 TR22 JACKSON COUNTY UNITED WAY  
 UJ22 KALAMAZOO UNITED WAY, GREATER  
 TZ22 LAKESHORE, UNITED WAY OF THE  
 T788 LAPEER COUNTY UNITED WAY  
 UK22 LENAWEE UNITED WAY  
 U822 LIVINGSTON COUNTY UNITED WAY  
 TO22 MANISTEE COUNTY UNITED WAY

TU22 MARQUETTE COUNTY UNITED WAY  
 U922 MASON COUNTY, UNITED WAY OF  
 UL22 MECOSTA-OSCEOLA UNITED WAY  
 TW22 MICHIGAN ASSOCIATION OF UNITED WAYS  
 TX22 MIDLAND COUNTY, UNITED WAY OF  
 TY22 MONROE COUNTY UNITED WAY  
 UY22 MONTCALM-IONIA COUNTY, UNITED WAY OF  
 U188 NEIGHBOR TO NATION  
 U222 NORTHEAST MICHIGAN UNITED WAY  
 UG22 NORTHWEST MICHIGAN, UNITED WAY OF  
 UN22 OTSEGO COUNTY UNITED WAY  
 UB88 OTTAWA COUNTY UNITED WAY, GREATER  
 T222 PARTNERS FOR A BETTER WORLD  
 UQ22 PLYMOUTH COMM UNITED WAY  
 UP22 PORTLAND COMMUNITY FUND  
 U422 SAGINAW COUNTY UNITED WAY  
 U600 SANILAC COUNTY, UNITED WAY OF  
 UX22 SOUTHEASTERN MICHIGAN, UNITED WAY  
 UB22 SOUTHWEST MICHIGAN UNITED WAY  
 U588 ST CLAIR COUNTY UNITED WAY  
 T922 ST JOSEPH COUNTY UNITED WAY  
 T188 TRI-CITY AREA UNITED WAY  
 U620 TUSCOLA COUNTY, UNITED WAY OF  
 TC22 UNITED NEGRO COLLEGE FUND  
 U622 VAN BUREN COUNTY UNITED WAY  
 U722 WASHTENAW COUNTY, UNITED WAY OF  
 UW22 WEXFORD-MISSAUKEE COUNTIES,  
 UNITED WAY OF



### Questions?

#### Give us a call!

Call Heather (517) 664-9800  
 Call Nicole (517) 664-9812

#### Visit

[www.misecc.org](http://www.misecc.org)  
 to give online.

### Section A

Method of Payment

#### Give by Check

Make check payable to your organization(s) of choice, NOT SECC. Write code on check.

#### Give by Credit Card

\$20 minimum pledge required

Please check one

MC \_\_\_ VISA \_\_\_ AMEX \_\_\_ OTHER \_\_\_

Account Number \_\_\_\_\_

Expiration Date \_\_\_\_ - \_\_\_\_

Billing Zip Code \_\_\_\_\_

### Section B

Select Organizations

#### Select Organization(s)

You must designate at least one organization

Code# \_\_\_\_\_ Total gift \$ \_\_\_\_\_

Code# \_\_\_\_\_ Total gift \$ \_\_\_\_\_

### Section C

Your Information (Please Print)

Name \_\_\_\_\_

Street Address \_\_\_\_\_

City \_\_\_\_\_ St \_\_\_\_\_ Zip \_\_\_\_\_

Telephone (\_\_\_\_) \_\_\_\_\_

Cell phone (\_\_\_\_) \_\_\_\_\_

Email \_\_\_\_\_

SERA Chapter (if applicable) \_\_\_\_\_

Please send me a written acknowledgment

### Section D

Signature \_\_\_\_\_

**MAIL PLEDGE FORM to:**  
**Michigan SECC Retirees Campaign**  
**330 Marshall Street, Suite 211**  
**Lansing, MI 48912**

**Pantone 307 U**

**Pantone Hexachrome Green U**